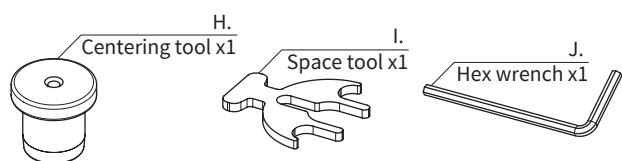
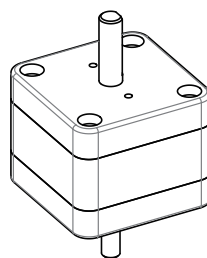


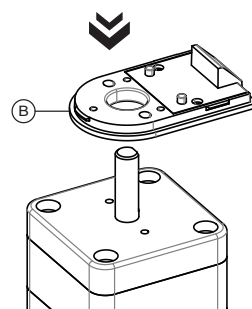
Installation tool



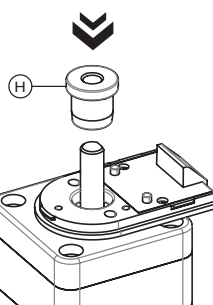
① Prepare the motor.



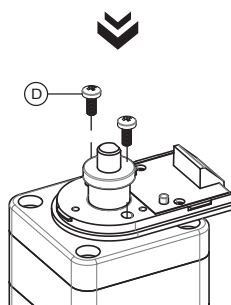
② The encoder base is mounted on top of the motor.



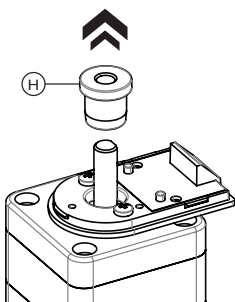
③ Place the centering tool onto the shaft.



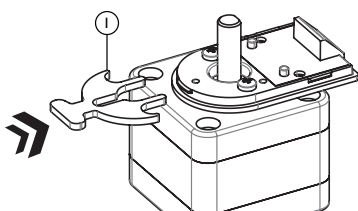
④ Tighten the mounting screws.



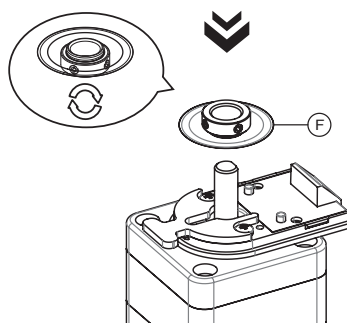
⑤ Remove the centering tool.



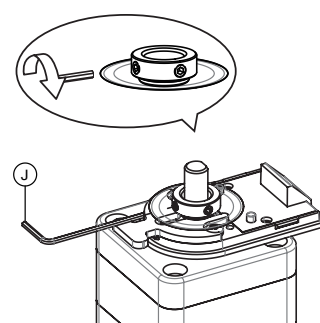
⑥ Place the space tool.



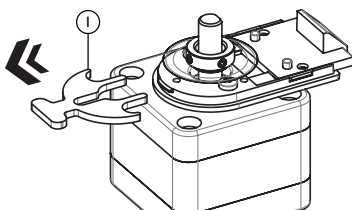
⑦ With the code-disk facing downwards, install the hubdisk onto the shaft.



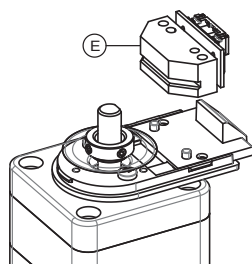
⑧ Tighten the set screws of the hubdisk.



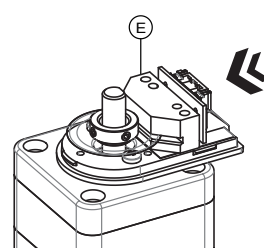
⑨ Remove the spacing tool.



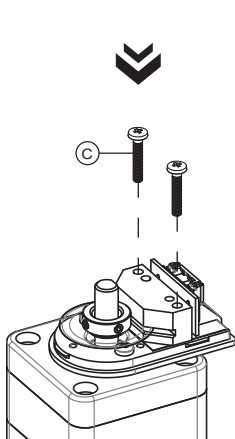
⑩ & ⑪ Place the sensor onto the base gently.



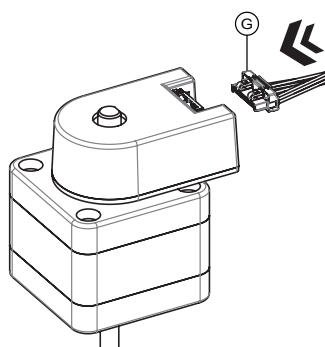
⑫ Push the sensor forward.



⑬ Fasten the sensor with the screws.



⑮ Assemble the cable.



⑯ The assembly process is now completed.

